

Desk T-Nut Install

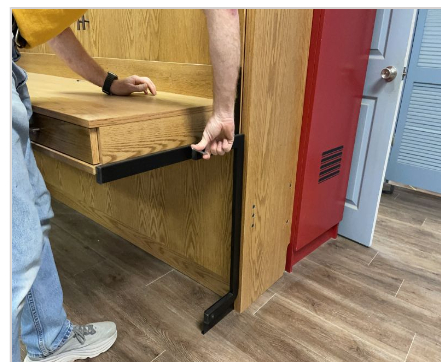
 Safety  Quality
Time To complete:



1 Needed:
1/4" Dill Bit, four T-Nuts, four 10-24 x 1/2" screws, two 10-24 x 1 3/8" screws
Also Needed not shown: Drill, hammer and screwdriver.



2 Remove mattress.



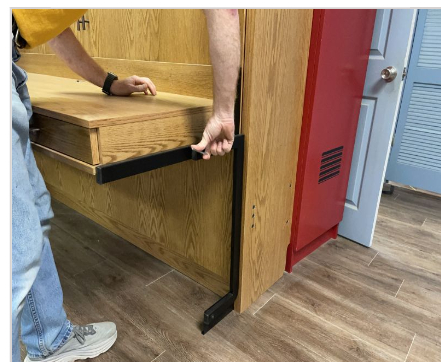
3 Close bed and remove screws at the pivot point on both sides using an allen wrench. Have a helper hold the desk. It could pull the face open.



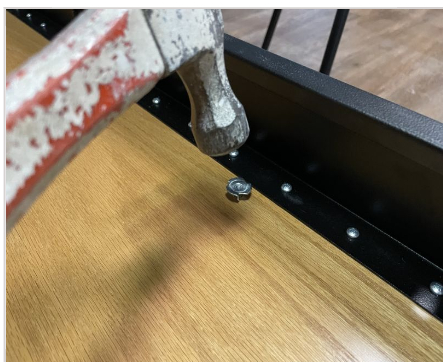
4 Remove the center/top screw on each hinge. If there is a center hinge remove the two outer screws.



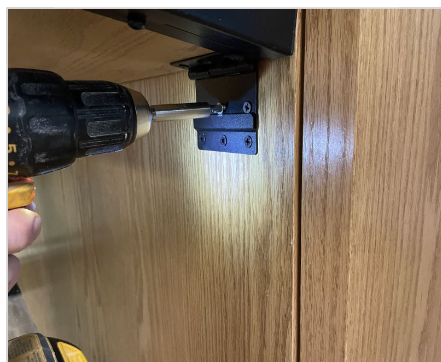
5 With a 1/4" drill bit, drill out the holes that had the screws removed.



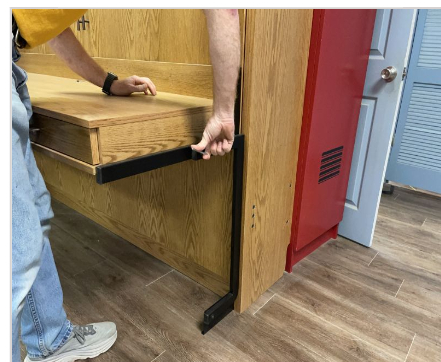
6 Reconnect the pivot point.



7 Open the bed, clear away any splintered wood and hammer in the T-Nuts in each hole.



8 Disconnect the pivot again as in step 3, lift the desk and put in 10-24 screws. NOTE: If there is a support block in the center, use longer screws



9 Reconnect the pivot point and replace the mattress.