



\*\*\*Customer's Name\*\*\*  
\*\*\*Work Order #\*\*\*



It's like having your own shop!

Drawn By: Logan Davis

March 10, 2023

\*\*\*Customer's Name\*\*\*

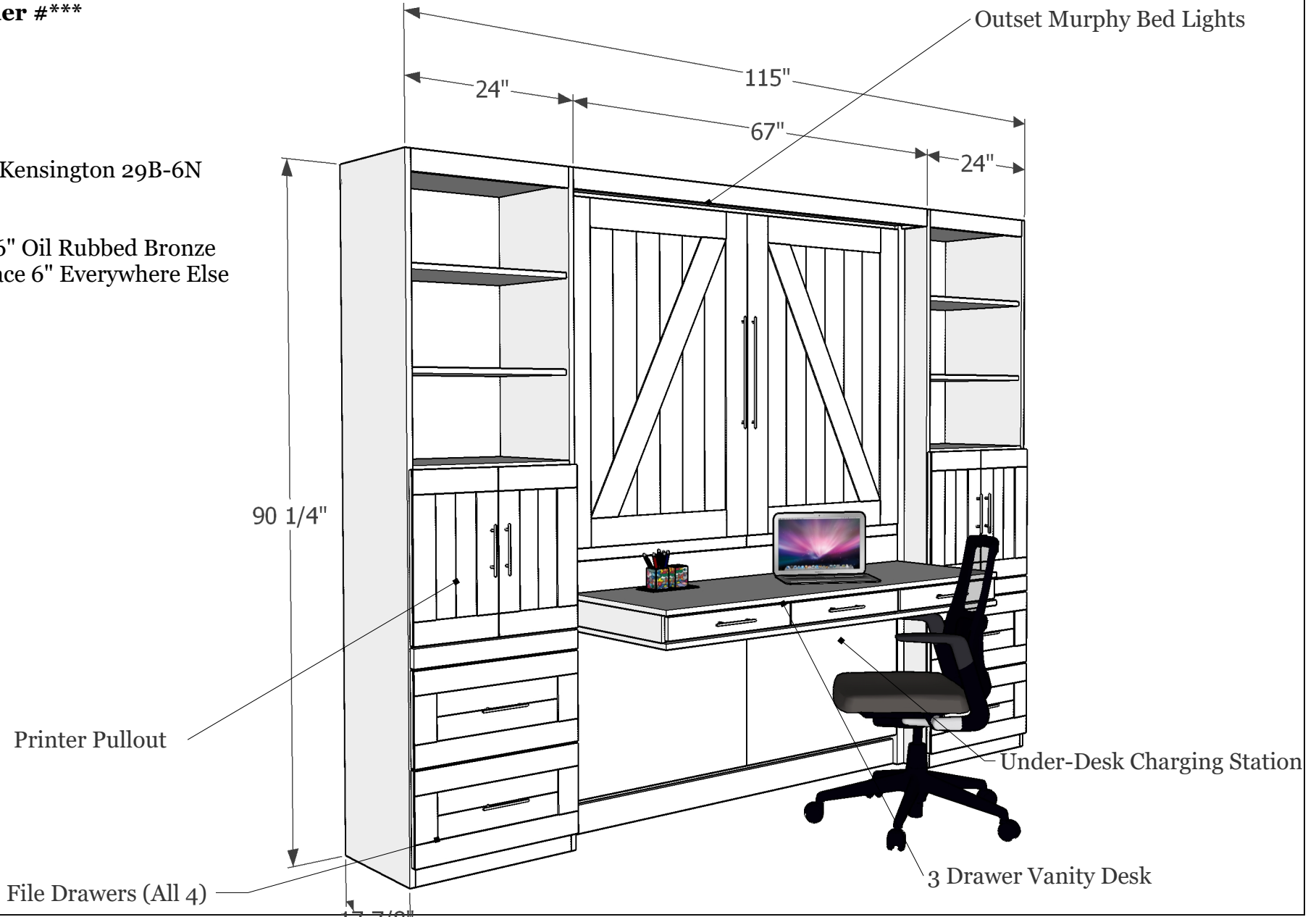
\*\*\*Work Order #\*\*\*

**Size:** Queen

**Wood:** Maple

**Color:** Clark+Kensington 29B-6N  
"Basil Leaf"

**Hardware:** 16" Oil Rubbed Bronze  
Bar Pulls on Face 6" Everywhere Else



Main Drawing with Measurements



It's like having your own shop!

\*\*\*Customer's Name\*\*\*

\*\*\*Work Order #\*\*\*

REVISIONS

	MM/DD/YY	REMARKS
1	--/--/--	...
2	--/--/--	...
3	--/--/--	...
4	--/--/--	...
5	--/--/--	...

01

A



Face Open



It's like having your own shop!

\*\*\*Customer's Name\*\*\*

\*\*\*Work Order #\*\*\*

REVISIONS

	MM/DD/YY	REMARKS
1	--/--/-- ...	
2	--/--/-- ...	
3	--/--/-- ...	
4	--/--/-- ...	
5	--/--/-- ...	

02

A



Outlet Lights



It's like having your own shop!

\*\*\*Customer's Name\*\*\*

\*\*\*Work Order #\*\*\*

REVISIONS

	MM/DD/YY	REMARKS
1	--/--/-- ...	
2	--/--/-- ...	
3	--/--/-- ...	
4	--/--/-- ...	
5	--/--/-- ...	

03

A





Under desk Charging Station

Under Desk Charging Station



It's like having your own shop!

\*\*\*Customer's Name\*\*\*

\*\*\*Work Order #\*\*\*

REVISIONS

	MM/DD/YY	REMARKS
1	--/--/-- ...	
2	--/--/-- ...	
3	--/--/-- ...	
4	--/--/-- ...	
5	--/--/-- ...	

A 04



Bookcase Open



It's like having your own shop!

\*\*\*Customer's Name\*\*\*

\*\*\*Work Order #\*\*\*

REVISIONS

	MM/DD/YY	REMARKS
1	--/--/--	...
2	--/--/--	...
3	--/--/--	...
4	--/--/--	...
5	--/--/--	...

05

A

# Bookcase Lights

Not on your Work Order but we can add lights to the top of each bookcase. They are \$60 each if you like to add them. You'll also need a touch switch that works independently of the center lights.



Extras: Bookcase Lights



It's like having your own shop!

\*\*\*Customer's Name\*\*\*

\*\*\*Work Order #\*\*\*

### REVISIONS

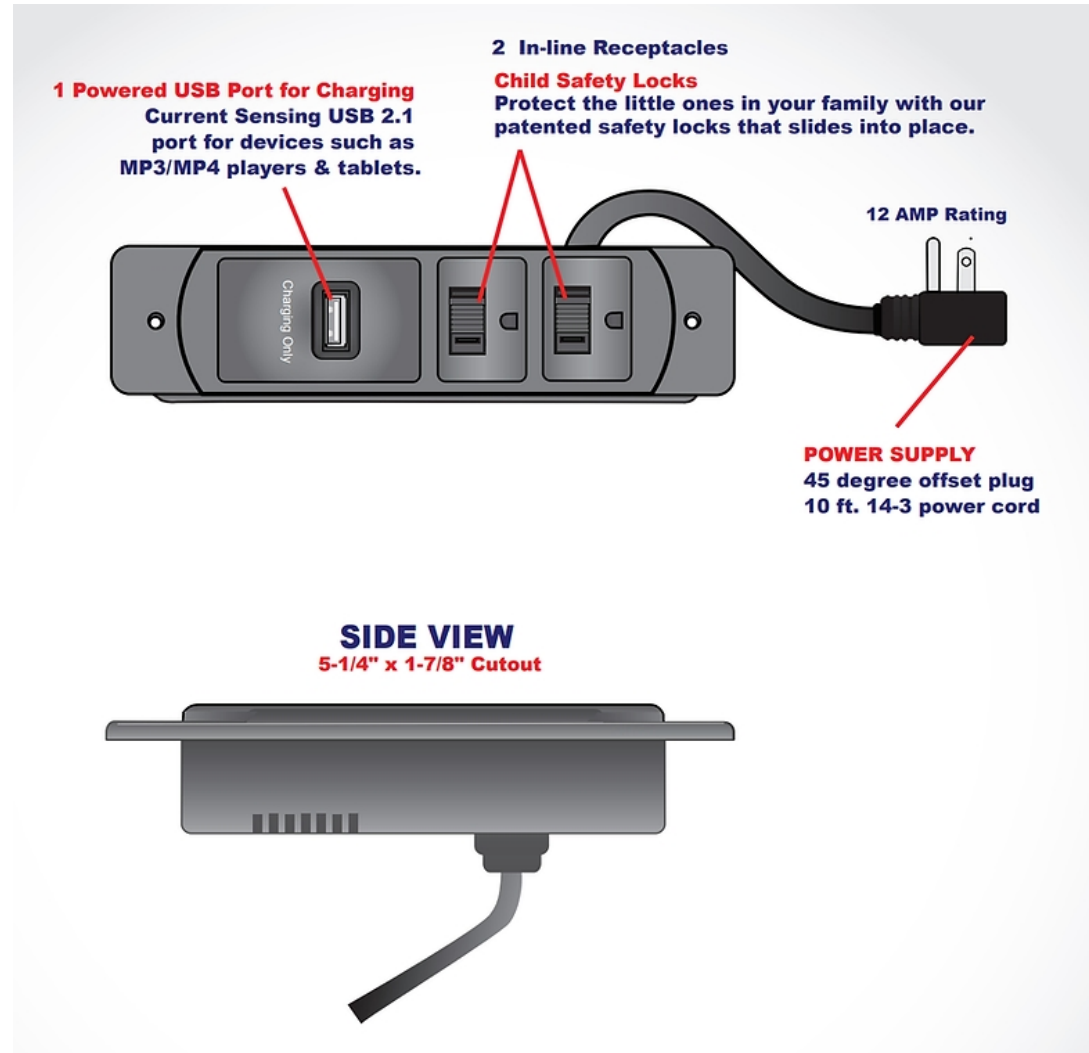
	MM/DD/YY	REMARKS
1	--/--/-- ...	
2	--/--/-- ...	
3	--/--/-- ...	
4	--/--/-- ...	
5	--/--/-- ...	

06

A

# Extras: Bookcase Charging Station

These outlets are normally placed at the back of the shelf above the drink tray pullout. They come with two 110V receptacles with Child Safety Locks and a 10 amp rating. Also charge/power your phone, tablet or MP3 player with a USB 2.1 charger.



Extras: Bookcase Charging Station



It's like having your own shop!

\*\*\*Customer's Name\*\*\*

\*\*\*Work Order #\*\*\*

### REVISIONS

	MM/DD/YY	REMARKS
1	--/--/--	...
2	--/--/--	...
3	--/--/--	...
4	--/--/--	...
5	--/--/--	...

07

A

# Extras: Drawer Locks

We can add locks to your drawers. We can key them alike or key each side with their own key.



Extras: Drawer Locks



It's like having your own shop!  
 \*\*\*Customer's Name\*\*\*  
 \*\*\*Work Order #\*\*\*

REVISIONS		
	MM/DD/YY	REMARKS
1	--/--/--	...
2	--/--/--	...
3	--/--/--	...
4	--/--/--	...
5	--/--/--	...